



DUPLEX BLOCK D
EAST ELEVATION (STREET ELEVATION)



DUPLEX BLOCK D
WEST ELEVATION (REAR)



DUPLEX BLOCK D
NORTH ELEVATION (STREET ELEVATION)



DUPLEX BLOCK D
SOUTH ELEVATION (STREET ELEVATION)

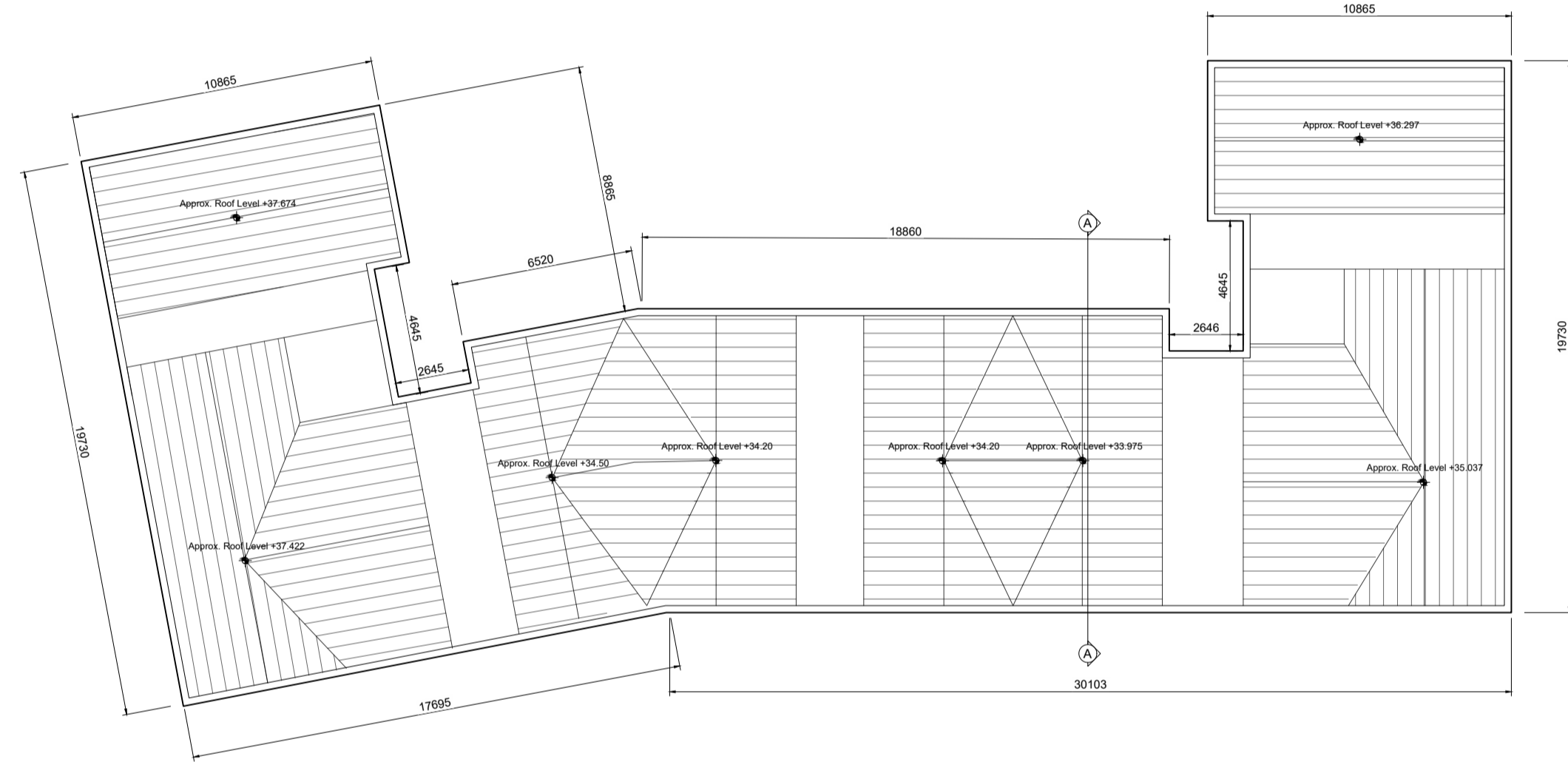


DUPLEX BLOCK D
SECTION A-A

Unit Type

- 3 Bed Duplex - 5 Person
- 2 Bed Duplex - 4 Person
- 1 Bed Apartment

| Dup. Block | 1 Beds | 2 Beds | 3 Beds | Total Units |
|------------|--------|--------|--------|-------------|
| D | 10 | 9 | 1 | 20 |



DUPLEX BLOCK D
ROOF PLAN



DUPLEX BLOCK D
SECOND FLOOR PLAN



DUPLEX BLOCK D
GROUND FLOOR PLAN



DUPLEX BLOCK D
FIRST FLOOR PLAN

- © This drawing is copyright.
- 1 Do not scale this drawing.
- 2 Errors and omissions to be immediately notified to Architect.
- 3 All dimensions to be checked on site.
- 4 To be read with relevant Engineers drawings.

Note on Internal Floor Plans
All noted room areas are gross.

The proposed areas and aggregate areas comply with *Sustainable Urban Housing: Design Standards for New Apartments Guidelines for Planning Authorities. (December 2020)*

Where bedroom areas are noted they are exclusive of any built-in storage space.

Storage is generally provided off the hallway or kitchen, and is not provided within a bedroom. Furniture, fittings and fixtures shown on the plans are indicative.

External Finishes:

Roof:
Slate or clay/concrete tiles with solar thermal or photovoltaic panels subject to orientation and detailed design

Walls:
Selected facing brick with render where indicated on drawings.

Windows:
uPVC or Aluminium framed window system

Gutters/downpipes:
uPVC or aluminium

Balconies:
Projecting: Toughened glazing & stainless steel handrails on precast concrete or metal frame galvanized steel base and guarding/ railing.

Entrance Canopy:
Pressed or standing seam metal on Timber framing

revisions date ins

description

Duplex Block D

Floor Plans,
Roof Plan, Sections &
Elevations

job
Development at
Oldtown, Swords,
Co. Dublin
Phase 5

client
Gerard Gannon Properties

issue
Planning SHD Stage 3

CONROY CROWE KELLY
ARCHITECTS
65 MERRION SQUARE
DUBLIN 2

PHONE 661399011 FAX 6765715
E-MAIL info@cck.ie

drawing no. 1736-SHD-D-4-300

rev'n

scale 1:200 A1
date MAR '22
drawn LD
checked PG